

FE-LFXXXNB12-XXX-P

PU Encapsulated Flexible LED



5 meter strip length, 9.6W/m

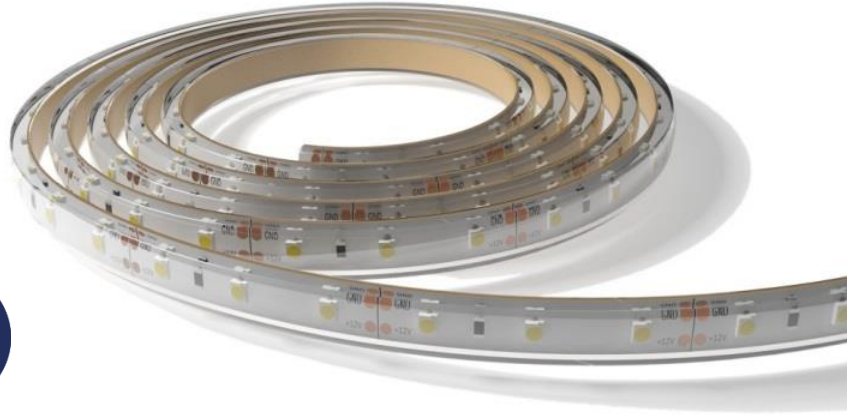
Self-adhesive backing for quick and easy application

IP68 - Ideal accent lighting and decorative installations in bathroom and spa applications

Excellent colour rendering with up to 95 CRI in Warm White

Greater colour consistency with 3 Step Macadam Ellipse binning

Features and Benefits



Technical Data

Forge Part Number	Correlated Colour Temperature	CRI	Lumens/m	Typ. LEDs/m	Voltage Input	Typ. W/m	Typ. mA/m	Typ. lm/W
FE-LF060NB12-865-P	6500K	80	900	60	12	9.6	800	94
FE-LF060NB12-840-P	4000K		860	60	12	9.6	800	90
FE-LF060NB12-827-P	2700K		760	60	12	9.6	800	79
FE-LF060NB12-965-P	6500K	90	770	60	12	9.6	800	80
FE-LF060NB12-940-P	4000K		730	60	12	9.6	800	76
FE-LF060NB12-927-P	2700K		640	60	12	9.6	800	67
FE-LF060NB12-U40-P	4000K	95	650	60	12	9.6	800	68
FE-LF060NB12-U27-P	2700K		570	60	12	9.6	800	59

Part Numbering

FE - LF

XXX

No. LEDs per meter

NB

Normal
Brightness

12

Input
Voltage

- XXX -

Colour
Code

P

PU
Encapsulated

Application Details

Each 5m reel of product is supplied as an encapsulated unit. Resizing of the strip post-production is not supported. Forge can manufacture this product in custom lengths supplied prepared and ready to install; please contact Forge's Sales team for more information. The minimum bend radius of this product is 80mm. Operating temperature range: -15 to +40°C.

It is the responsibility of the custom to verify the suitability of the product for the application.

Disclaimer

No representation, warranty, responsibility or liability is or will be accepted by Forge Europa Limited in relation to the accuracy or completeness of any information it provides. It is the responsibility of the customer to verify the suitability of the product for its application. All design work supplied by Forge Europa Limited is to be assumed confidential and is the sole property of Forge Europa Limited. It must not be used, copied or disclosed to any third party without the prior written consent of Forge Europa Limited. All contracts are subject to Forge Europa Limited's General Terms and Conditions of Trading which can be found at www.forge.co.uk. E&OE



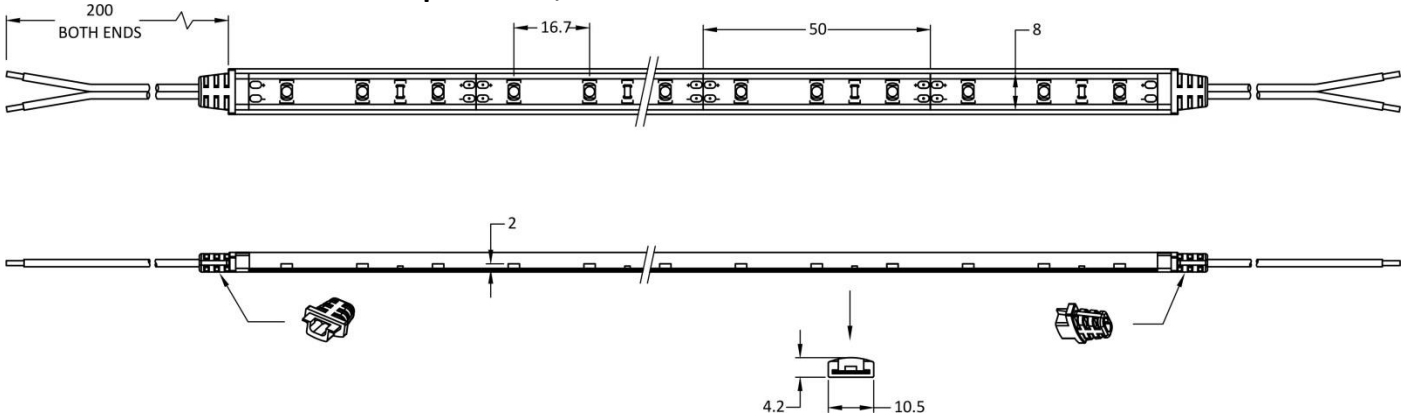
FE-LFXXXNB12-XXX-P

PU Encapsulated Flexible LED



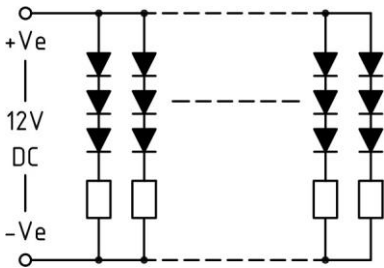
Mechanical Dimensions

FE-LF060NB12-XXX-P – 60 LEDs per meter, 50mm sections



All dimensions in mm

Circuit Schematic



It is the responsibility of the customer to verify the suitability of the product for the application.

Notes:

- CCT figures quoted based upon LED output prior to encapsulation

