



Sort your Thermals

Effective thermal management is fundamental to reliable LED solutions. Forge has the expertise you need.

Sort your Thermals

LONG LASTING LED SOLUTIONS

A heatsink transfers the generated heat from the LED board to the ambient air using convection and radiation. When we design heatsinks our aim is to optimise airflow and improve the

thermal efficiency of the complete LED solution. With improved efficiency you'll get more for your money and even greater reliability.

CAN'T I JUST GET AN OFF THE SHELF HEATSINK?

There are lots of off-the-shelf LED heatsinks on the market - but if you're going to take time to have your own custom LED solution then why compromise efficiency and performance with a "standard" heatsink. With Forge we make a custom design and own-branded

heatsink just as easily as you can select an off-the-shelf solution. So why compromise?

- custom branding
- custom finishes
- improve thermal efficiency

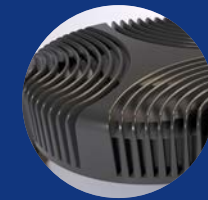
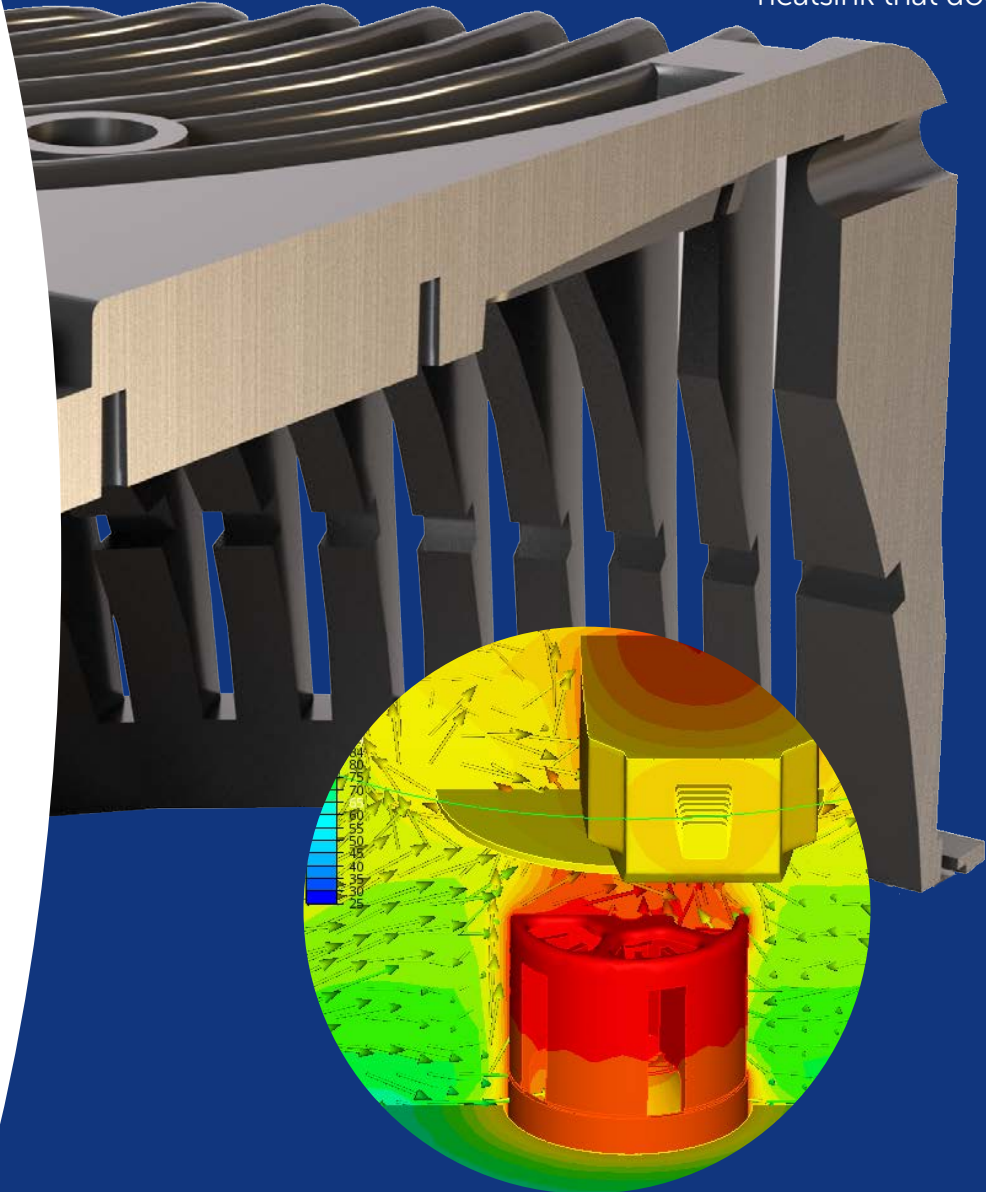
WE DO ALL THE HARD WORK

Our highly experienced R&D team has decades of electronics cooling design experience between them. Combined with our CFD (Computational Fluid Dynamics) software we have all the tools to get you the very best heatsink that does exactly what you need it to

do. We'll manufacture it too. When we say we'll do all the hard work, we really mean it.

- rapid tooling
- cost effective
- your USP

We consider all the elements - PCB, LED, thermals and optics - as a complete solution to manufacture your ideal LED product. When it comes to the thermals we can design and manufacture a heatsink that does exactly what you need it to, at a cost you'll love.



The beauty of a heatsink that's custom designed for you is just that - it becomes a thing of beauty. Designed for performance and aesthetic you'll walk away with a stylish heatsink that works



From extrusions and diecasting to stamping, machining and hybrids - we'll manufacture in volumes from hundreds to tens of thousands



With as much as a 10% decrease in light output being attributed to temperature increases, incorporating a custom heatsink into your LED solution is a must.

The expertise you need

WHY FORGE?

With our profound technical knowledge and our ability to make all sorts of stuff, we're your ideal manufacturing partner.

AN INTELLIGENT APPROACH

We quickly understand what you need and deliver just that. With a considered approach we're able to offer help every step of the way – even after you receive your Forge manufactured solution. We're always looking for improvement, keeping us and you ahead of the game.

A MANUFACTURING PARTNER


We're sustainable, safe and forward-thinking. Our attitude has kept us here since 1993 and continues to drive our business to this day. With Forge as your manufacturing partner, you'll have access to our: -

- profound technical knowledge
- commercial nous
- intelligent approach
- tenacious, innovating people

What more could you need?



product
innovation



a safe pair
of hands



technology
investors

market
knowledge

Work with us today on your very latest developments and see just how our added-value can add value for you.



Forge Europa Limited. The Old Railway, Princes Street, Ulverston, Cumbria, LA12 7NQ United Kingdom

Tel: +44 (0) 1229 580000 email: sales@forge.co.uk www.forge.co.uk