

## Features:

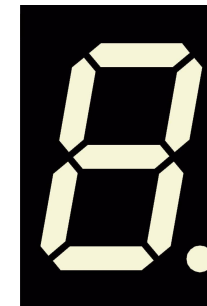
- Industry 1st white display technology
- Wide viewing angle
- Black face colour, White segment colour
- High segment intensity
- Consistent emission characteristics
- Aesthetically pleasing colour
- Ideal for broad range of applications

## Available options:

- Alternative face colour
- Alternative font
- Long terminal pins

## Font design

Product not shown  
actual size



## Electro / Optical Characteristics - $I_F$ W22 = 20 mA

$T_a = 25^\circ C$

Part Number Common Cathode	Part Number Common Anode	Emitting Colour	Chromaticity Coordinates		Forward Voltage $V_F$		Luminous Intensity $I_V$	
			x	y	typical	max	min	typical
FN1-0561W220SBW	FN1-0562W220SBW	White	0.30	0.30	3.20	3.70	-	8
Units					V		mcd / seg. (digit average)	

## Maximum Ratings $T_a = 25^\circ C$ - Derate above $25^\circ C$

Characteristic	Condition	Symbol	Rating	Units
Pulse Forward Current	0.1 duty cycle @ 1KHz	$I_{FP}$	35	mA
DC Forward Current		$I_F$	15	mA
Reverse Voltage Operating	$I_R = 10 \mu A$	$V_R$	5	V
Temperature Storage		$T_{opr}$	- 25 to + 80	$^\circ C$
Temperature Lead soldering		$T_{stg}$	- 30 to + 85	$^\circ C$
temperature	1.6 mm from body - max 3 seconds		260	$^\circ C$

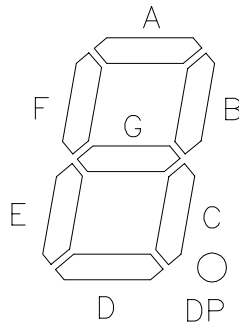
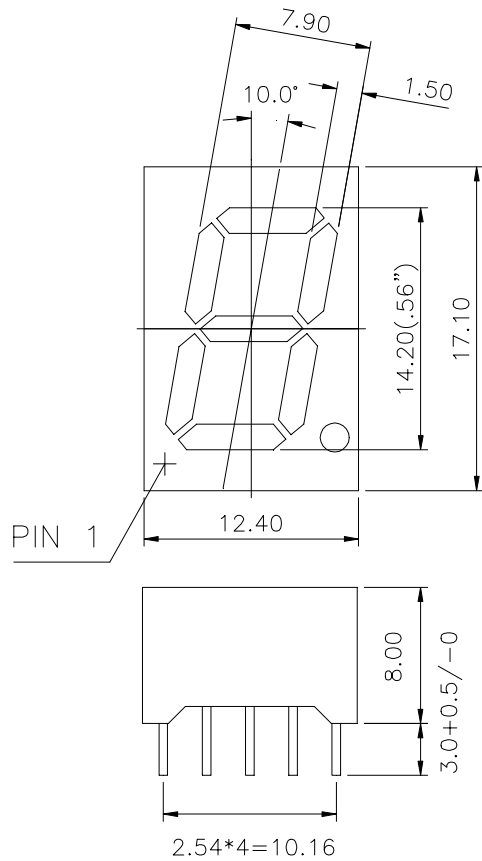
## Note

Chromaticity coordinates to CIE 1931 Standard.

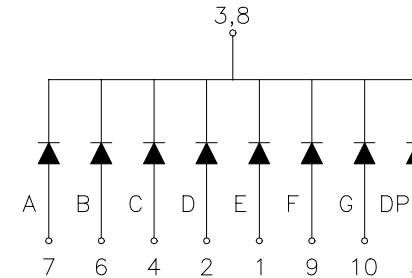
Industry standard procedures regarding static must be observed when handling this product.



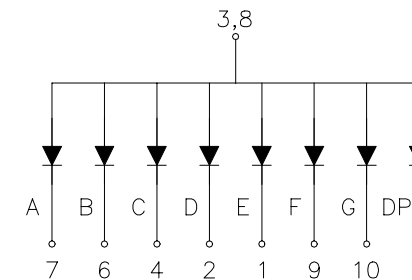
## Package Outline



## Common Cathode



## Common Anode



Tolerance  $\pm 0.25$  mm unless stated



Forge Limited The Old Railway, Princes Street, Ulverston, Cumbria, LA12 7NQ United Kingdom.  
 Tel: +44 (0)1229 580000. Email: info@forge-europa.co.uk Website: www.forge-europa.co.uk

No representation, warranty, responsibility or liability is or will be accepted by Forge Europa Limited in relation to the accuracy or completeness of any information it provides. It is the responsibility of the customer to verify the suitability of the product for its application. All design work supplied by Forge Europa Limited is to be assumed confidential and is the sole property of Forge Europa Limited. It must not be used, copied or disclosed to any third party without the prior written consent of Forge Europa Limited. All contracts are subject to Forge Europa Limited's General Terms and Conditions of Trading which can be found at [www.forge-europa.co.uk](http://www.forge-europa.co.uk)